

DataNet Enterprise

Automation's Answer for a Web-Based Dashboard

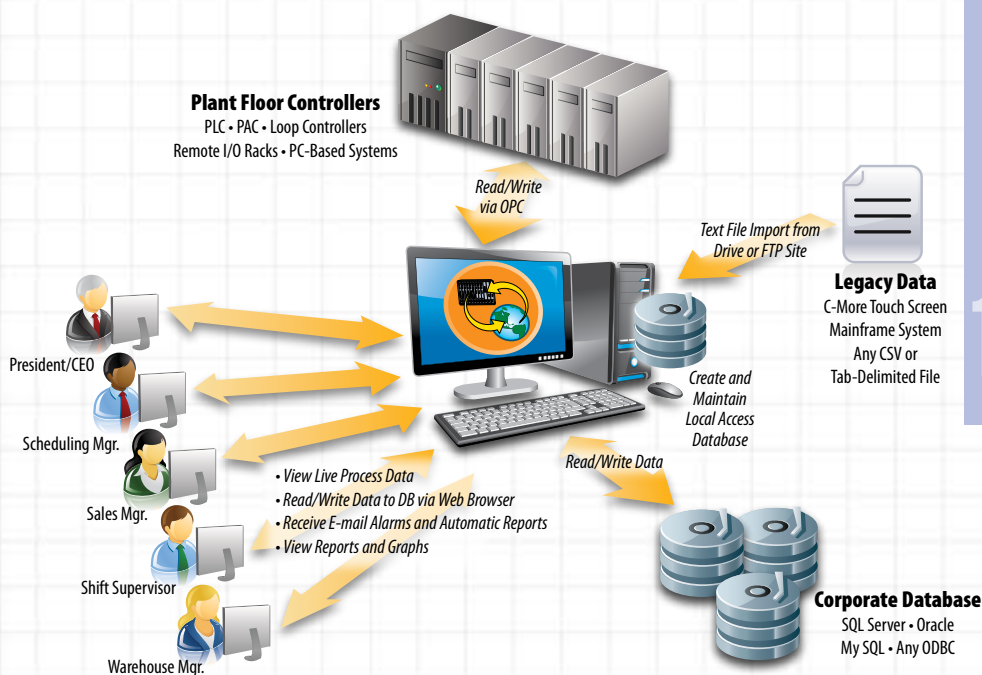
DataNet Enterprise is a software package that gives you the basic functionality of an Enterprise Resource Planning (ERP) tool or Manufacturing Execution System (MES) to collect process data that is reliable, accessible and easily shared. DataNet Enterprise provides a comprehensive view of your facility that enables your team to take a proactive stance in managing your processes rather than a reactive style of management.

Build an enterprise monitoring system with DataNet Enterprise to meet your company's specific needs. Once your system is built to collect the information critical to running a smooth operation, use DataNet Enterprise to create a Web-based dashboard to display real-time Key Performance Indicators (KPIs) accessible by the personnel that you determine need access.

Not only does DataNet Enterprise give you remote monitoring capabilities through the Internet, you can also schedule e-mail system alerts and regular reminders to be sent to the appropriate personnel to make decisions or to take action. With DataNet Enterprise, you can also collect historical data to your database and create reports and graphs for analysis to make large or incremental changes to ensure your facility runs smoothly and efficiently.

FEATURES

- 1 View Live Process Data via OPC
- 2 Log Data to Multiple Databases
- 3 Create a Web Interface to Read/Write to a Database
- 4 Pull Data from Multiple Sources
- 5 Create Custom Reports and Graphs
- 6 Launch Automatic E-mail Reports and/or Trigger E-mail Alarms
- 7 Control Page Access through Group-Based Security
- 8 Use Icons as Visual Cues to Take Action
- 9 Create and Maintain Database Structures
- 10 Schedule Data Imports from Local Text Files or FTP Sites

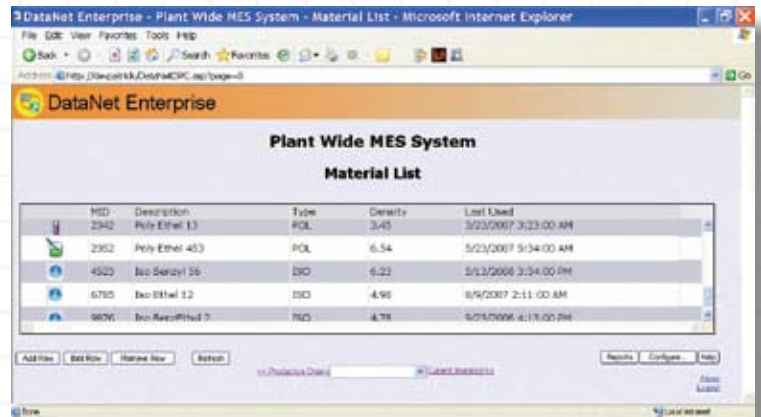


The Manager's HMI

APPLICATIONS – Putting DataNet Enterprise To Work.

Manage Core Information

Create and maintain important lists of common core information used across all of your business processes. Creating these lists establishes consistency throughout your enterprise. Icons may be utilized in the lists to act as visual cues to alert staff of the status of list items at a glance. These easy-to-read lists can prompt employees to take necessary actions quickly. Security features are in place to limit access so that core information can only be controlled by designated personnel.

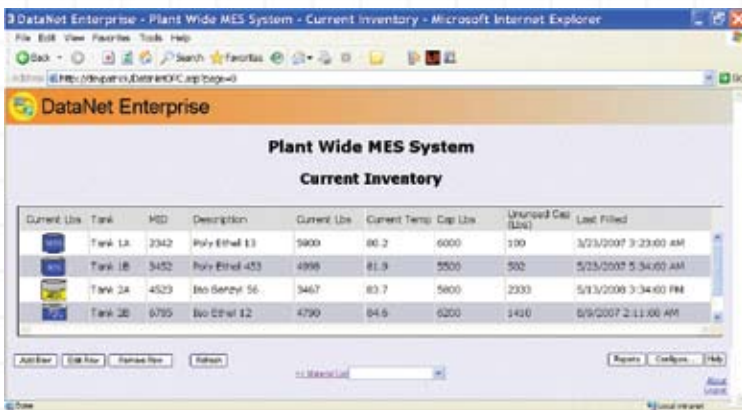


The screenshot shows the 'Plant Wide MES System Material List' interface. It features a table with columns for ID, Description, Type, Density, and Last Used. Below the table are buttons for 'Add New', 'Edit Row', 'Remove Row', and 'Refresh'. A search bar is also present.

| ID | Description | Type | Density | Last Used |
|------|----------------|------|---------|----------------------|
| 2342 | Poly Ethel E3 | POL | 3.45 | 3/23/2007 3:23:00 AM |
| 2352 | Poly Ethel 453 | POL | 6.54 | 5/23/2007 3:34:00 AM |
| 4523 | Bo Benzyl 56 | BO | 6.23 | 5/13/2006 3:34:00 PM |
| 6705 | Bo Ethel E2 | BO | 4.98 | 8/9/2007 2:11:00 AM |
| 9809 | Bo Benzyl 57 | BO | 4.78 | 6/19/2006 4:19:00 PM |

Access Real-Time Data

DataNet Enterprise enables employees that have the proper security clearance to remotely monitor, through a Web browser, real-time processes. Personnel can also receive automatically generated e-mail alerts of critical plant conditions as they occur.



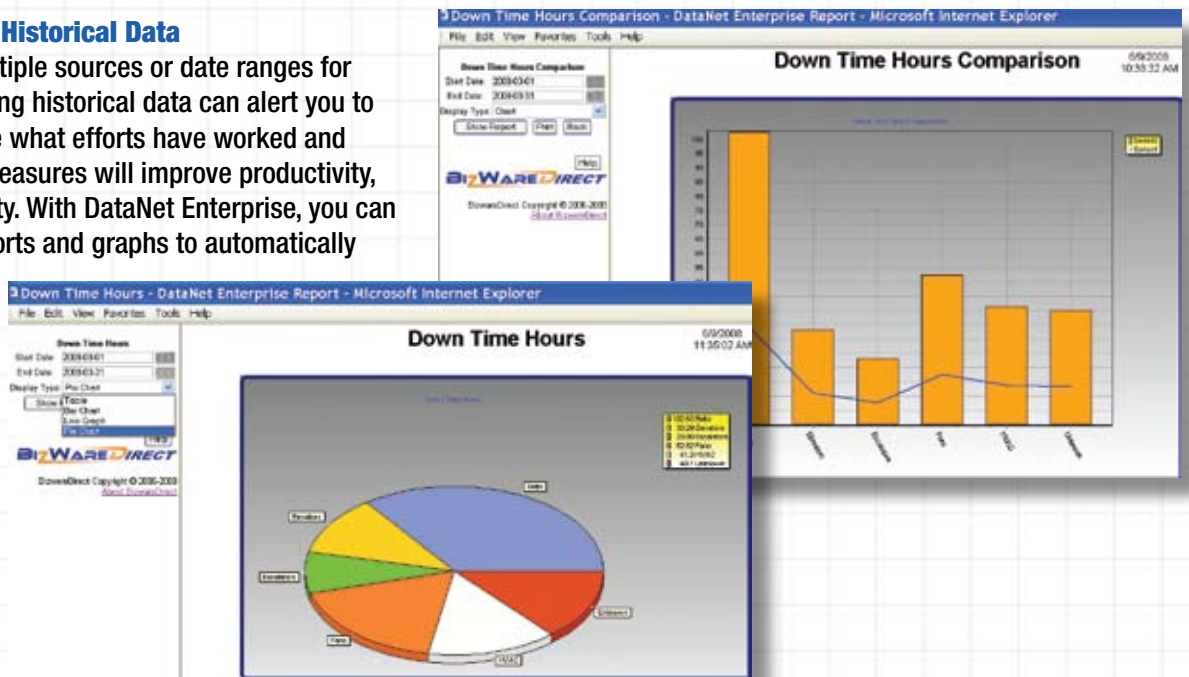
The screenshot shows the 'Plant Wide MES System Current Inventory' interface. It features a table with columns for Current Lbs, Tank, ID, Description, Current Lbs, Current Temp, Cap Lbs, Unused Cap (%), and Last Filled. Below the table are buttons for 'Add New', 'Edit Row', 'Remove Row', and 'Refresh'. A search bar is also present.

| Current Lbs | Tank | ID | Description | Current Lbs | Current Temp | Cap Lbs | Unused Cap (%) | Last Filled |
|-------------|------|----|----------------|-------------|--------------|---------|----------------|----------------------|
| 5900 | 2342 | | Poly Ethel E3 | 5900 | 86.2 | 6000 | 100 | 3/23/2007 3:23:00 AM |
| 4998 | 2352 | | Poly Ethel 453 | 4998 | 81.9 | 5000 | 500 | 5/23/2007 3:34:00 AM |
| 3467 | 4523 | | Bo Benzyl 56 | 3467 | 83.7 | 5800 | 2333 | 5/13/2006 3:34:00 PM |
| 4790 | 6705 | | Bo Ethel E2 | 4790 | 84.5 | 6200 | 1410 | 8/9/2007 2:11:00 AM |

To motivate employees and improve performance, you can combine real-time, shop-floor data and historical statistics onto a Web page to compare against production metrics.

Collect and Analyze Historical Data

Collect data from multiple sources or date ranges for comparison. Comparing historical data can alert you to changes to determine what efforts have worked and what hasn't. These measures will improve productivity, quality and profitability. With DataNet Enterprise, you can schedule custom reports and graphs to automatically generate. Once a report/graph has been created, DataNet Enterprise can e-mail those reports/graphs to those who need the information most.



System Requirements and Compatibility

- Pentium II with 128 megabytes of RAM
- At least 10 megabytes of free hard disk space
- OPC 1.0 or OPC 2.0 compliant server
- Windows NT (SP6 or higher), 2000, 2003, XP
- Internet Explorer 6.0 or higher or Firefox 2.0 or higher
- Compatible with included Web server

BIZWAREDIRECT
Improving Automation Through Innovation

2450 Atlanta Highway, Suite 1202
Cumming, Georgia 30040
Phone: 770-886-5878 • Fax: 770-886-1390
www.bizwaredirect.com